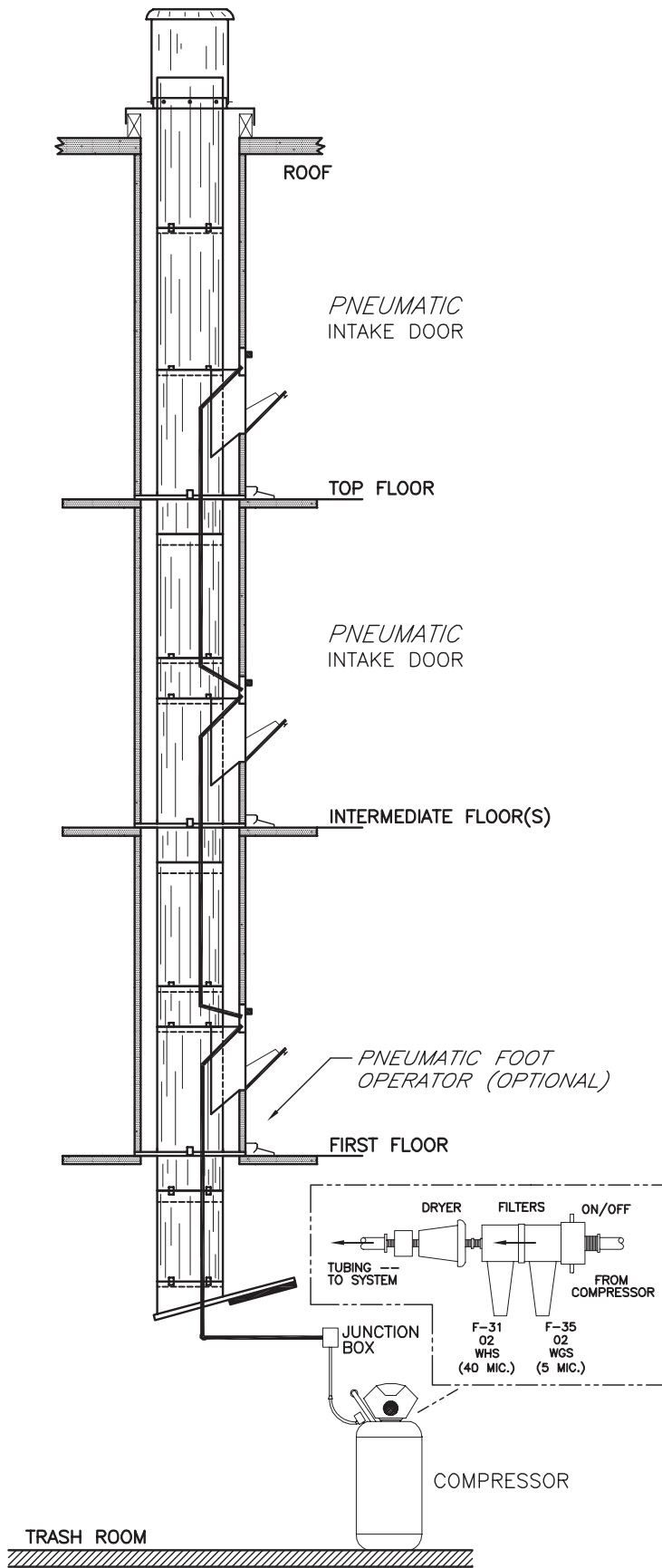


FULLY PNEUMATIC SYSTEM

Handicapped Accessible Trash Chute Intake Door





PNEUMATIC INTAKE DOOR:

Functional, effortless operation makes *Pneumatic* the ideal intake door for all users. Reliability and convenience are assured by the careful selection of operating components and the simplicity of design. Anticipate years of trouble-free operation after many thousands of cycles.

Air supply preparation is the key to on-going, smooth operation. Air is continuously cleaned and dried before being introduced into the system. The auto-lubrication function operates continuously to assure maximum component life.

PNEUMATIC OPERATION:

User depresses PUSH BUTTON momentarily. The *Pneumatic* door opens to the FULL-OPEN position and remains open for 10-30 seconds; or any intermediate time selected. Door then closes automatically.

CONSTRUCTION:

Pneumatic doors are constructed of 20 GA. Stainless Steel front face with 18 GA. galvanized steel back and door-tails. Frame is heavy gage steel angle.

The door bears a 1½" Hr. U.L. "B" label (250° F temperature rise - 30 minutes)

Door cylinder actuators have a stainless steel body with high strength aluminum porting ends. All control units and supply lines are industrial grade quality.

AIR SUPPLY:

An industrial grade 120V-15AMP compressor up to 3.5 HP is provided as air volume requires. Air supply is installed floor to floor using ¼" HD Polyethylene tubing housed in a ¾" flexible conduit.

SERVICE/ACCESS:

The front access panel above each intake door allows full maintenance or replacement of any component.

Two (2) Filter/Dryers remove moisture, dust, and other debris from the air line; maximizing component life.

Junction Box allows air lines of compressor and chute to be disconnected and/or replaced.

OPTIONAL EQUIPMENT:

Solenoid operated shut-off valve.

165° F. heat sensor to activate shut-off valve.

Pneumatic foot operators installed below intake doors to allow for "hands-free" door operation.

Safety lock-out, allowing only one (1) door to be operated at a given time.

WARRANTY:

A full **one-year** warranty provided covering all parts & labor.